

Forest Wisdom



Watercolors by Annette Durkin



**September 21 thru
November 16
2023**

Jacklin Arts and Cultural Center

405 N. William St. Post Falls, ID

Forest Wisdom



The majestic elegance and nobility of trees has captured my attention for years. Seeing a 1,000 year old live oak in Charleston, South Carolina struck me with awe - and humility.

The old-growth redwoods in the primeval forest of Muir Woods created a sacred sense of respect and honor as I walked the paths of these welcoming and formidable trees. *Forest Wisdom* portrays through watercolors my life long love for trees. Come journey with me through the wisdom of the forest.

The first temples were trees, living hope in the mystery of life.

Spiritual journeys and shared oneness have permeated my works on paper for many years. I have a sacramental view of the world around me. I see God's touch in everything, giving the ordinary an extraordinary power, beauty and simplicity.

I paint because I love to continually explore, interpret and attempt to capture a sense of the sacred, divine presence among us. I paint because I hope.

Thank you to my family, Team Durkin,
for your steadfast love and support!

Thank you to the Jacklin Arts and Cultural Center
for your support of this Exhibit!

Love. The greatest gift. The promise of new life.

Annette Durkin | September 2023

Exhibit Catalog



Refuge

The peace that passes all understanding.
The rest we find when we dwell in the steadfast love of God.

And under His wings you will find refuge. His faithfulness is a shield.

Psalm 91:4



The Spirit of Wisdom and Understanding

God's covenant with David is to be fulfilled through this prophecy of Jesus Christ, the Messiah. New Life coming out of the stump of Jesse.

The Passion flower is symbolic of the suffering of Christ.

A shoot shall come out from the stump of Jesse, and a branch shall grow out of his roots, the spirit of the LORD shall rest on him...

Isaiah 11:1-9



Fortune Leads the Way

The ultimate serenity and peace of the Japanese Tea Garden in San Francisco is designed for contemplation. The unexpected delight or puzzling admonition bursting forth from a fortune cookie. Life is chance and change.

Lead me, O LORD, in your righteousness. Lead me in your truth and teach me.

Psalms 5:8, 25:5



Abundant Faith

Abundant faith, expressed by the mustard plant and its tiny seeds under the mulberry tree branch. Through God's grace, we receive the gift and strength of faith, if we only but believe.

Jesus said, "If you had faith the size of a mustard seed, you could say to this mulberry tree, 'Be uprooted and planted in the sea,' and it would obey you." Luke 17:6



Walking Through Eternity: Muir Woods

A sacred sense of respect and awe permeates Muir Woods, the primeval forest of majestic, old-growth redwoods. Towering giants, descendants of trees first growing 20 million years ago, puts into perspective our brief moment in time.

When I look at the heavens, the work of your fingers, what are human beings that you are mindful of them, mortals that you care for them?

Psalm 8

Truth Rising

In this tribute to St. Brigid of Ireland, her four branches of Wisdom are represented by the central Celtic knotwork: hand, heart, head, hearth. Additional symbol motifs in this Celtic design: the four elements, four seasons, four directions. Bay leaves and Alpine flowers surround. The symbol behind the Celtic knot is a Tau cross. You might also see this as Truth.



Shelter

Shelter in peace, in harmony and humility, praising and thanking God, from whom all blessings flow.



And in its shade all great
nations lived.

Ezekiel 31:6c

Moonrise

The revelation of God in Creation. In the light of day and in the moon-rise, tied to wisdom and the feminine divine. Under the shelter of heart-shaped Linden leaves, the Bloodroot flowers and Shooting Stars are at peace, trusting in providential care, both day and night.

Wisdom is not the moon; she is the rising of the moon.



By day, the LORD commands his steadfast love, and at night his song is
with me, a prayer to the God of my life.

Psalms 42:8

Nesting

Great and mighty trees provide for God's creatures and serve His purposes, until they don't.

This Ezekiel allegory about pride is a cautionary tale from the God of humankind and nature.

All the birds of the air made their nests in its boughs. Ezekiel 31:6a



Samhain: Celtic Slumber

Samhain marked the end of the Celtic harvest season and the beginning of the cold time. In this slumber portrayal, the life that is always with us is underground and protected by the guardian tree, resting and awaiting the renewal time of spring.



As long as the earth endures, seedtime and harvest, cold and heat, summer and winter, day and night, shall not cease. Genesis 8:22



Then shall the trees of the forest sing for joy.

Then

Write your own story.
When will you sing for joy?
Wisdom accompanies
your journey,
if you will let her in.

1 Chronicles 16:33



The LORD is my strength and my shield. In Him my heart trusts.

Divine Protection

Sophia, the cosmic
Sacred, shielding us with
Her wisdom and protec-
tion. Guiding us through
the turmoils and joys of
life, if we but listen.

The early Irish practiced
Caim Prayer, literally
encircling themselves
with prayer, clothing
themselves in righteous-
ness and protection, the
person praying donning
metaphorical spiritual
armor against the dark-
ness that might be faced
during the day ahead.

*Encircle me, Lord,
keep harm without,
keep safety within*

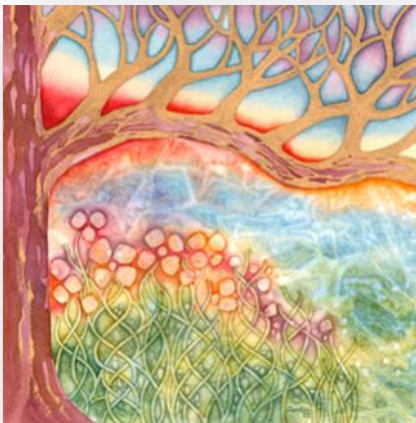
Psalm 28:7

Wisdom: The Dance of Life

Wisdom pervades all, protects all. The creative and joyful Spirit and power alive and abundant in all creation. The creative cosmic energy, the feminine aspect of God. As you follow Her, you will find joy, peace, and happiness not at the end of the journey but as the very stuff of which the journey is made. The Way to is the Way of.



Because of her pureness she pervades and penetrates all things. For she is a breath of the power of God, and a pure emanation of the glory of the Almighty. *Wisdom of Solomon 7:24b-25a*



Renewal: Celtic Warmth

The Celts celebrated two seasons: warm and cold. Warm began around May 1, Beltane, with May flowers and bonfires. Samhain marked the end of the harvest season and the beginning of the cold time. This straight forward approach to the seasons delights me.

As long as the earth endures, seedtime and harvest, cold and heat, summer and winter, day and night, shall not cease. *Genesis 8:22*



Sophia: The Sacred Feminine, Divine Wisdom

Sophia, the cosmic Sacred, shielding us with Her wisdom and protection. Guiding us through the turmoils and joys of life, if we but listen. The creative and joyful Spirit and power alive and abundant in all creation. From The creative cosmic energy, the feminine aspect of God.

She reaches mightily from one end of the earth to the other,
and She orders all things well.

Wisdom of Solomon 8:1



Sacred

The Tree of Life, the first Temple, radiating all colors in its sheltering branches. How lovely is our dwelling place when all colors come together in peace and harmony. The nimbus on the right with a spiral representing growth and cosmic energy, containing the four elements: earth, fire, air and water. From this small seed comes Life.

How lovely is your dwelling place.

Psalm 84:1



Creation

The celestial beauty; creation out of the void. Earth and water sweeping down from the heavens. The Cosmos keeping watch from eternity. Kairos, God's time is eternity.

Who alone does great wonders.

Psalm 136:4-9



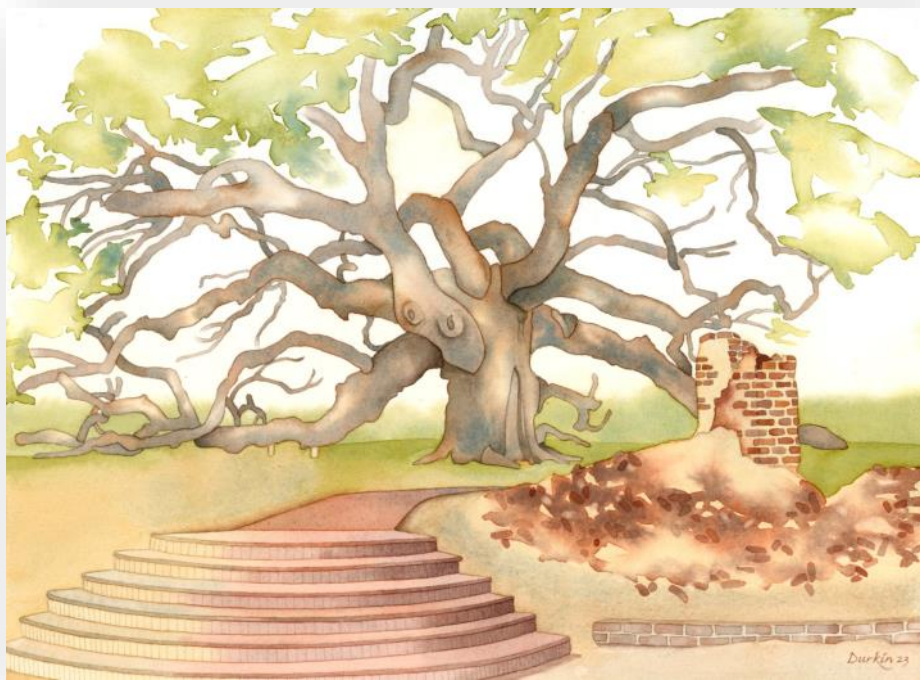
Healing

How lovely is our dwelling place when all colors come together in peace and harmony. The New Jerusalem. Paradise regained.

And the leaves of the tree are for the healing of the nations. Revelation 22:2b

They are like trees planted by streams of water, which yield their fruit in its season, and their leaves do not wither. In all that they do, they prosper.

Psalms 1:3



Silent Witness

The majestic elegance and nobility of trees has captured my attention for years. Seeing the 1,000 year old live oak at Middleton Place, South Carolina struck me with awe and humility. Walking the grounds past the tumbled brick remains of the main house was deeply moving and profound, giving me a sense of all the history witnessed as this magnificent tree stood fast, growing where it was planted.

The first temples were trees, living hope in the mystery of life.

Therefore, since we are surrounded by so great a cloud of witnesses, let us also lay aside every weight and the sin that clings so closely, and let us run with perseverance the race that is set before us.

Hebrews 12:1

Original Framed Watercolors

Refuge	\$275
The Spirit of Wisdom and Understanding	\$175
Fortune Leads the Way	\$850
Abundant Faith	\$200
Walking Through Eternity: Muir Woods	\$1500
Truth Rising	\$450
Shelter	\$200
Moonrise	\$1150
Nesting	\$1350
Samhain: Celtic Slumber	\$525
Then	\$200
Divine Protection	\$850
Wisdom: The Dance of Life	\$625
Renewal: Celtic Warmth	\$525
Sophia: The Sacred Feminine, Divine Wisdom	\$1750
Sacred	\$625
Creation	\$1150
Healing	\$1400
Silent Witness	\$1250
Tea Garden Duet	\$250
In the Still, Still Light	\$450

To purchase an original watercolor please contact
The Jacklin Arts and Cultural Center
director@thejacklincenter.org | 208-457-8950



ArtCDA.com is an online art gallery featuring print items from the works of Annette Durkin

ArtCDA.COM



Scan the QR code with your smartphone to go to the website
Chris Durkin | Art Products Manager
info@artcda.com

Out of the ground the LORD God made to grow every tree
that is pleasant to the sight and good for food,
the tree of life also in the midst of the garden, and the tree of the
knowledge of good and evil.

-- Genesis 2:9 --

The earth is full of the steadfast love of the LORD.

-- Psalm 33:5b --